

# CURRENTS™



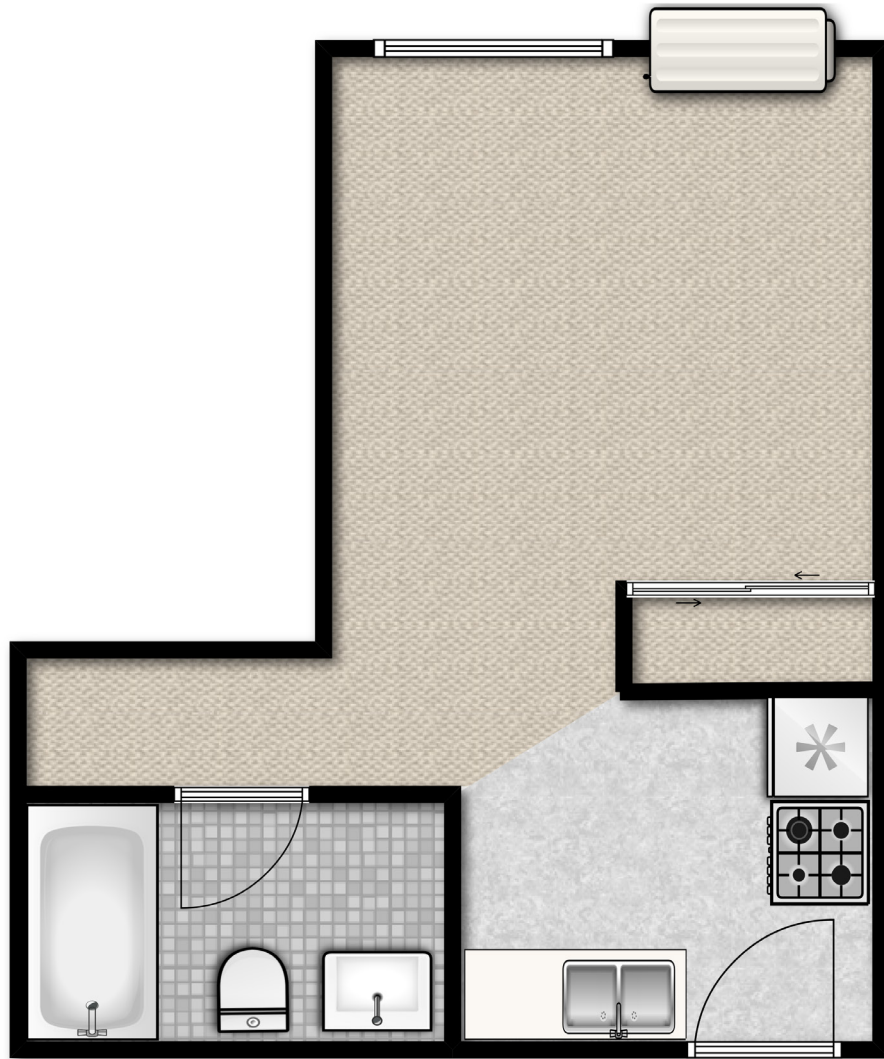
LIVEATCURRENTS.COM

## { A }

FLOOR PLAN

FROM THE FULLY APPOINTED GALLEY KITCHEN, SPACIOUS DINING AREAS AND IMPRESSIVE BEDROOM AND LIVING QUARTERS, A RESIDENCE AT CURRENTS IS JUST THE PLACE YOU'VE BEEN LOOKING FOR TO DROP ANCHOR AND SETTLE IN.

W W W



### FEATURES UNIQUE TO A FLOOR PLAN

- ★ 418 SQ FT

### UNIVERSAL FEATURES

- ★ Open & Airy Floor Plans
- ★ Spacious Rooms
- ★ Cabinetry with Custom Details & Natural Finishes
- ★ Walk-In Closets\*
- ★ Abundant Storage Space
- ★ Warm Natural Paint Accents
- ★ Private Patios & Balconies\*
- ★ Chrome & Brushed Nickel Hardware
- ★ Stainless Steel Sink with Delta Chrome Faucet
- ★ Thoughtful Wood Accents
- ★ Individually & Thermostatically Controlled Heating & Air Conditioning
- ★ Additional dining space
- ★ Ceramic Tile Shower Enclosures
- ★ Range with Cooktop & Oven
- ★ Contemporary Window Treatments
- ★ Plush Carpeting
- ★ Additional Bathroom Spaces\*
- ★ Integrated Dishwasher & Sink Disposals

### UTILITY INCLUSIONS

- ★ Heat
- ★ Water/Sewer
- ★ Trash
- ★ Recycling
- ★ Cooking Fuel\*

*\*Features & Inclusions may vary with Residence selection.*

3205 HARBOR LANE  
PLYMOUTH, MN 55447

*Destination*



HOME.

(T) 763-559-2303

(F) 763-559-6371